



Company Profile

RELIANCE



**CORPORATE
SECURITY**



Business, Administrative & Contact Information

- **Business name:** Reliance Corporate Security Services (PTY) Ltd
- **Business type:** PTY Ltd
- **Company registration number:** 2016/418605/07
- **Tax reference number:** 9124775223
- **VAT number:** 4410287744
- **PSiRA registration Number:** 2645770
- **Tel:** 021 949 9523
- **Fax:** 086 667 5020
- **E-mail:** Info@rcsec.co.za or Infocpt@rcsec.co.za
- **Physical address:** 90 Joubert Street, Parow 7500
- **Postal Address:** 90 Joubert Street, Parow, 7500
- **Banking details:**
 - **Bank:** ABSA BANK
 - **Account Type:** Business Cheque Account
 - **Branch:** ABSA Blue Route Mall
 - **Account number:** 4095393123
 - **Branch code:** 632005
 - **Swift code:** ABSA ZA JJ
- **Attorneys:** D.J. Smith and Niehaus Attorneys
- **Accountants:** Fiscal Ethics
- **Affirmative Action Initiatives:** Job opportunities to the previously disadvantaged.
- **B-BBEE:** Level 1
- **Public Liability Insurance:** R20M

Introduction

Reliance Corporate Security Services focuses on providing a Professional Security Service through physical guarding, incorporating technical security aids and advisory to all businesses such as Government, Corporates, Retail, Manufacturing/ Factories, Business Offices, Educational Institutions and Private Residences that require such services.

RCSS is a female owned entity comprising of highly skilled top structures. Although very young, RCSS has managed to gain a position as one of the Preferred Service Providers for the Western Cape Government's Framework Agreement for Transversal Security Services through resilience, patience and persuasion. As a Service Provider on the Framework, we have achieved a Risk Category of "**LOW RISK**".

Our personal experience in the guarding industry has led us on a projected path of building on three key fundamental factors in achieving a highly effective service level. These are, building on loyalty from staff, transfer of skills and technical monitoring equipment. There will always exist the phenomena of unpredictability when working with the human factor, however, these 3 fundamentals is key to minimising the percentage risk of unpredictability.

We emphasise transparency and accountability overall. A client would receive this difference from our services. Our very modern and fully equipped control room receives daily activity reports with photos, patrolling schedules, and daily on/off duty reports. Should there be an incident, we can easily refer and determine the exact location of each security officer on site at the time. We at RCSS believe it is important to not just place a body, but also add value to the body that we place.

In alignment with Governments' strategic procurement policies, as well as service provider's intention to their social responsibility out of profiteering. We are pleased to announce that we have created a Social Responsibility Division within Reliance Corporate Security Services. We at RCSS commit to social upliftment programs out of profiteering. You, as a client, will receive feedback on a quarterly basis of all activities about this.

RCSS's fundamentals will always remain sustainable development to meet the present needs of clients balanced with an uncompromising approach to future development and innovation.

We look forward to doing business with you.

Business competitiveness

Reliance Corporate Security Services passionately believes that a Security Service Provider is there to:

1. Provide a Professional Service.
2. Reduce the threats of Crime against people and property.
3. Provide a safe and secure environment for all.
4. Ensure Service Delivery and Transparency.
5. Have the interests of the clients' business at heart.

Quality policy & objectives

Reliance Corporate Security Services will be making use of the ISO 28000 approach. This is to ensure the same Quality linked to All ISO standards.

Service pledge

- Reliance Corporate Security Services will always adopt a unique approach.
- Reliance Corporate Security Services will be Innovative.
- Reliance Corporate Security Services has established a wealth of highly skilled, qualified and experienced role players.
- Reliance Corporate Security Services is growing from strength to strength and shall endeavour to maintain a high Service Level to all our clients.
- Reliance Corporate Security Services is Enthusiastic, Professional, Complete, and Concise.
- Our slogan is ***"People You Can Rely On"*** ... and we will endeavour to be just that!

Business model

Reliance Corporate Security Services will provide a High, Efficient Service Level to our clientele driven through, Transparency, Efficiency and Competency, which make us totally opposite from our competitors.

Value chain

We believe there are no limits on the size of the market. There is a huge demand in all target markets.

There is a clear trend that the market is not happy with the way security is currently performing as Security is seen as just a cost to many businesses. Education is clearly lacking. There is huge growth potential and opportunity for a business of this size.

Challenges

Reliance Corporate Security Services will be facing the following barriers when entering this market i.e.:

- High capital costs.
- High marketing costs.
- Consumer acceptance and brand recognition.
- Training and skills.
- Unions.
- Tariff barriers and quotas.

Our intention is to overcome these barriers through Continuous Improvement:

- A. PLAN (Establish)
- B. DO (Implement and Operate)
- C. CHECK (Monitor and Review)
- D. ACT (Maintain and improve)



Reliance Corporate Security Services shall be able to deal with:

- Change in government regulations.
- Change in the economy.
- Change in your industry.

Services Rendered

- Physical Guarding
- Events Management
- CCTV Monitoring
- Installation of Security Equipment (Alarms, Electric Fencing, Cameras, etc.)
- Polygraph Services
- Criminal Checks
- 24 Hour Control Room
- Health and Safety checks and recommendations
- Risk assessments and recommendations

Method of Operations

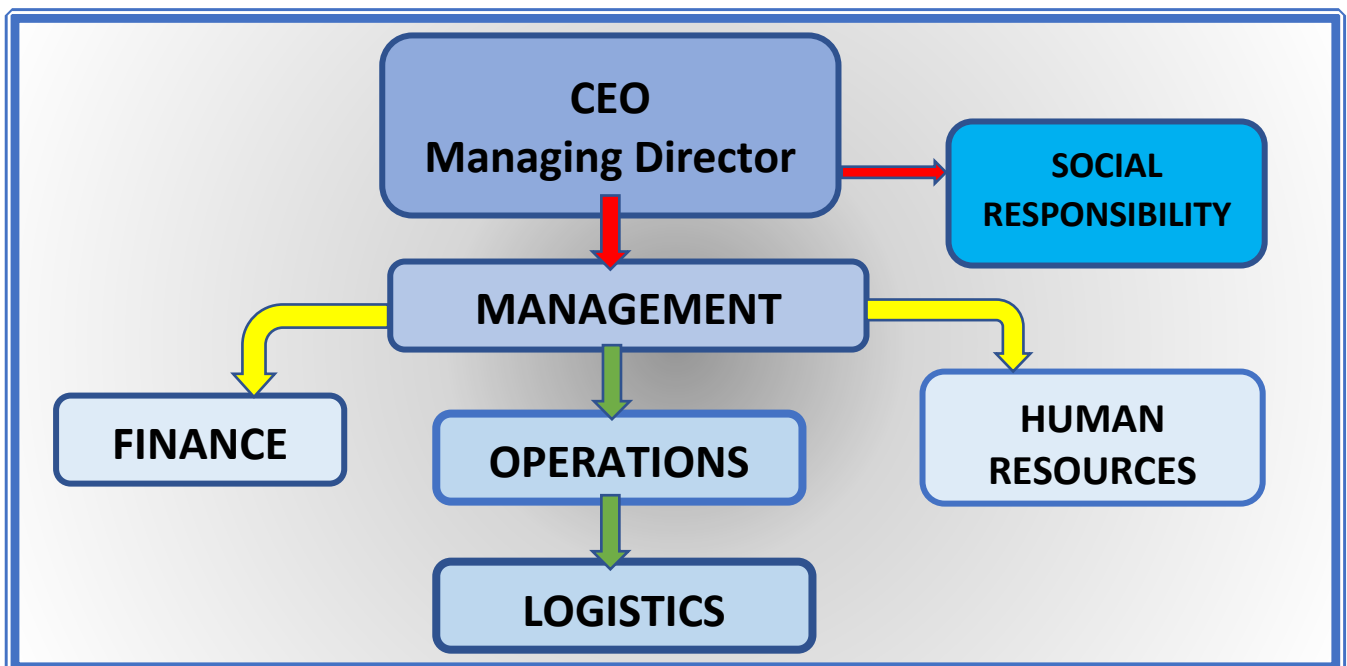
- Do a comprehensive Risk Assessment
- Customise a unique Security Operational Plan for each individual client
- Weekly / Monthly meetings with clients
- Email feedback of Security Officer patrols to client on a regular basis
- Compilation of a Service Level Agreement between RCSS and client
- Compilation of Job Description for each site as per client request

Transfer of Skills Program

□SESA is conducting the following skills programs:

- **All RCSS officers will received the following training:**
 - First Aid Level 1
 - Basic Fire Fighting in the workplace
 - HIV and AIDS awareness in the workplace.
 - Customer Service.
- **Junior Management receive the following training:**
 - Occupational Health and Safety representative Training
 - Initiator and Disciplinary procedures.
 - Junior Management and Supervisor development.
 - Leadership and Mentoring principals in the workplace.
- **Senior Management receive the following training:**
 - Union negotiations and Strike Management.
 - Consumer Protection
 - Employment Equity
 - Labour Law in the workplace.
 - Basic Conditions of Employment in the Workplace.
 - B-BBEE

Management structure



Reliance Corporate Security Services is a 100% Black Female owned company and has the highest BEE rating of 135%. The Director has a huge experience in the Security Industry where she was phenomenally successful as the previous founder and owner of Several Security Companies. She has a business qualification and vast experience in the Security Industry.

RELiance CORPORATE SECURITY SERVICES IS OFFERING EXPERTISE OF A VERY HIGH CALIBRE.